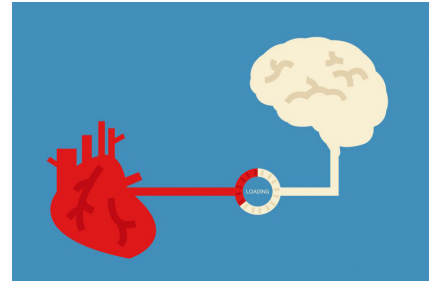


# AMY CATERINA / PALOMAR COLLEGE / PHOTO 120

## LIGHTROOM SETUP

1. Choose where your photos and catalog are going to live. I like to think of the pictures as the organs and the catalog as the brain. They have to stay together and be synced or else there will be mixed messages and lost files.



2. You will make a master folder on the desktop and save it to on your external hard drive. If you save your files to the school's harddrive you can not access it from home. If you make a folder on your external hard drive, make sure it is fast enough so your workflow will not be slowed down. I suggest an external such as this LaCie. You will have to format it for MAC and PC if you have a PC at home. The harddrive will come with instructions on how to do this properly.

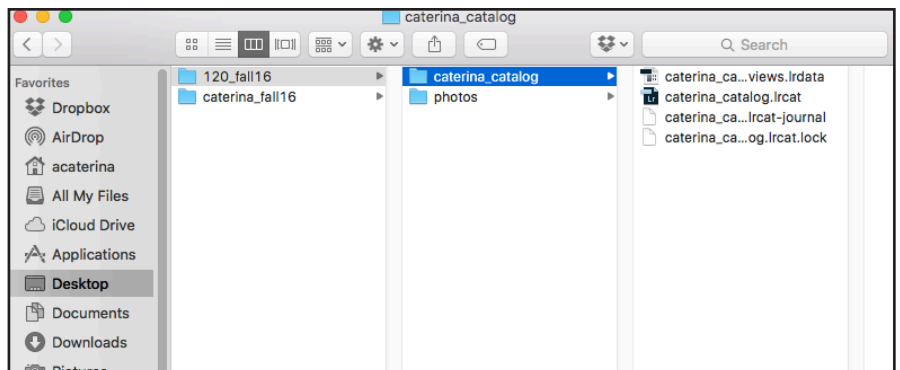


3. If you choose to save it to the school computer desktop, you can back it up to your own harddrive. This can take a bit of time, consider this when organizing your class time.

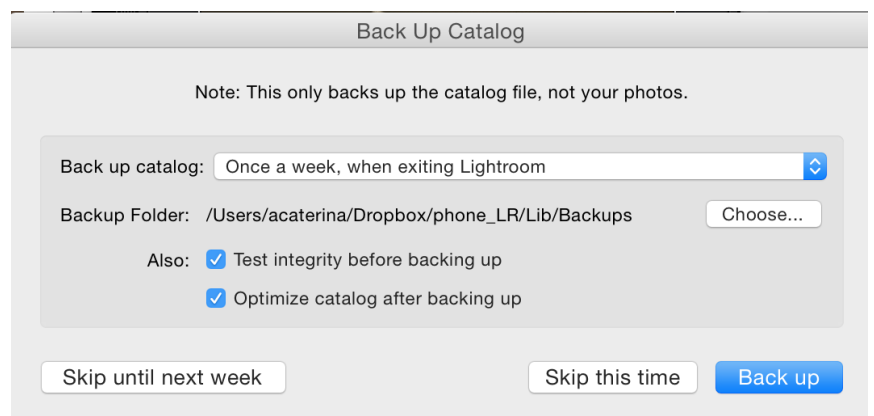
4. Make a master folder on your desktop or harddrive. Call it lastname\_LR, or lastname\_LR\_F16. (Name it something you can identify>.)

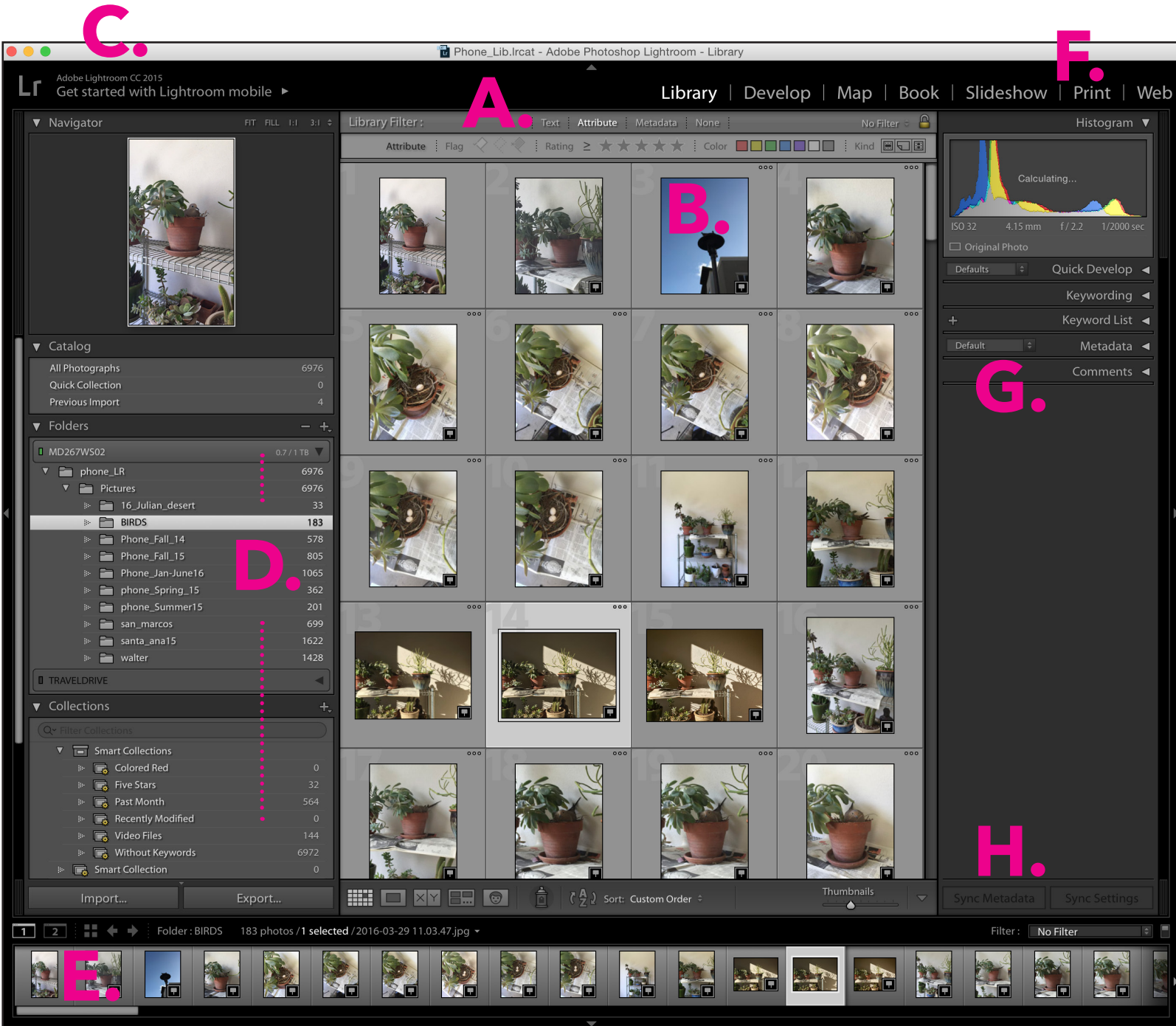
5. Inside this folder make another folder called Photo. ALL OF YOUR PHOTOS WILL LIVE IN HERE.

6. Open Lightroom > new catalog > save the catalog in your lastname\_LR folder NEXT TO the Photo folder (but not inside it.)



7. You may see a dialog window asking if you want to back up your library, I usually do this once a week.





## THE LIGHTROOM WORKSPACE IN THE GRID VIEW

A. Library Filter bar B. Image display area C. Identity plate D. Panels for working with source photos E. Filmstrip F. Module Picker G. Panels for working with metadata, keywords, and adjusting images H. Toolbar